

PRIORI[®]
ADAPTIVE SKINCARE

PRIORI | TREATMENT MENU



ADAPTIVE TREATMENT MENU

TREATMENTS THAT ADAPT TO YOUR LIFESTYLE: BOOK IN TIME BLOCKS.

ADAPTIVE TREATMENTS FOR VARIOUS SKIN CONDITIONS,
for those who are: "TIME CONSCIOUS – RESULTS HUNGRY".

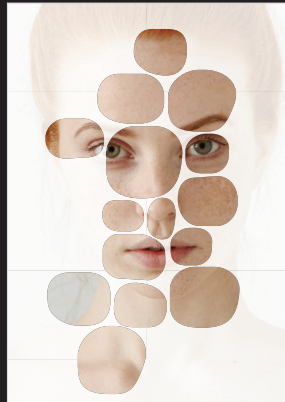
Even though we are challenged for time, we all have skincare needs that are based upon our individual chemistry.

PRIORI has developed the "PRIORI Adaptive Treatment Menu" that features results-driven solutions, especially designed to adapt to the specific skincare needs of the individual, in a time efficient manner.

All of the PRIORI products are formulated around the concept of "Adaptive Skincare".

Your skin, based on your individual chemistry, takes from the product formula what it needs, when it needs it.

Our results-proven treatment routines are designed to produce your 'ideal skin'.



Alongside our skin specialist's professional expertise, we can ensure the PRIORI Adaptive Treatment Menu will allow us to create a totally adapted, bespoke treatment designed for your personal skincare needs – for the skin you have today.

PRIORI treatment services follow 3 essential steps:

1. Choose your ideal treatment time.
2. We will analyze your skin in real time - today's needs.
3. We will customize and devise your treatment to your personal needs.



ADAPTIVE TREATMENT MENU

FACIAL TREATMENTS

PRIORI skin services are adapted to all skin concerns, conditions and needs – individualized - as no 2 skins are the same on any 2 days.

Following a thorough analysis to decode your skin requirements, your PRIORI expert will devise a specialized treatment adapted to your skin needs and desires.

All you need to do is choose the length of time you have to spare!

Point to note: Sometimes, you may be advised on a course of treatments for ultimate, best results.



PEEL IT - 15 MINUTES

Short on time? Your first-step skin peel for the “TIME CONSCIOUS – RESULTS HUNGRY”. Designed to analyze the needs of the skin, exfoliate and brighten the complexion and even the appearance of the skin, this quick lunchtime peel is power-packed with multi-layer benefits – even if you only have 15 minutes to spare!

PEEL IT
15:00
MINUTES

SKIN RE-BOOT - 30 MINUTES

Sometimes we all need a “Re-Boot” - yet time is precious. This adaptive facial procedure is designed to do just that - re-boot your skin. Your skin specialist will customize this treatment to your individual needs, leaving your skin brighter, more plump, restored and hydrated – results you can see and feel!

SKIN RE-BOOT
30:00
MINUTES

SKIN UNWRAPPED - 45 MINUTES

(if you have already experienced PRIORI'S advanced Peel system)

Unwrap your skin's true potential. If you are an *advanced peel user* you will love the benefits you see with this facial treatment. We will adapt and decode your skin needs, regardless of your skin concerns - this will be the ultimate skin prescription.

SKIN UNWRAPPED
45:00
MINUTES

UNCOVER. EXPOSE. RENEW. - 60 MINUTES

A treatment with the wow factor that provides dramatic and visible results while achieving skin rejuvenation with improved elasticity, texture, tone and clarity. Relax and lose yourself in a wealth of massage plus unique innovative skincare results! Includes a hand and arm peel treatment – you will awake feeling de-stressed, restored with youthful-looking skin. The ultimate indulgence. Your skin. Uncovered.

UNCOVER. EXPOSE.
RENEW.
60:00
MINUTES



PRIORI[®]

ADAPTIVE SKINCARE

www.prioriskincare.com

LET'S GET SOCIAL

 [insta@prioriskincare](https://www.instagram.com/prioriskincare)  [FB@PrioriSkincare](https://www.facebook.com/PrioriSkincare)

SkinSciPac Inc., 12774 Via Grimaldi, Del Mar, CA 92014-USA

